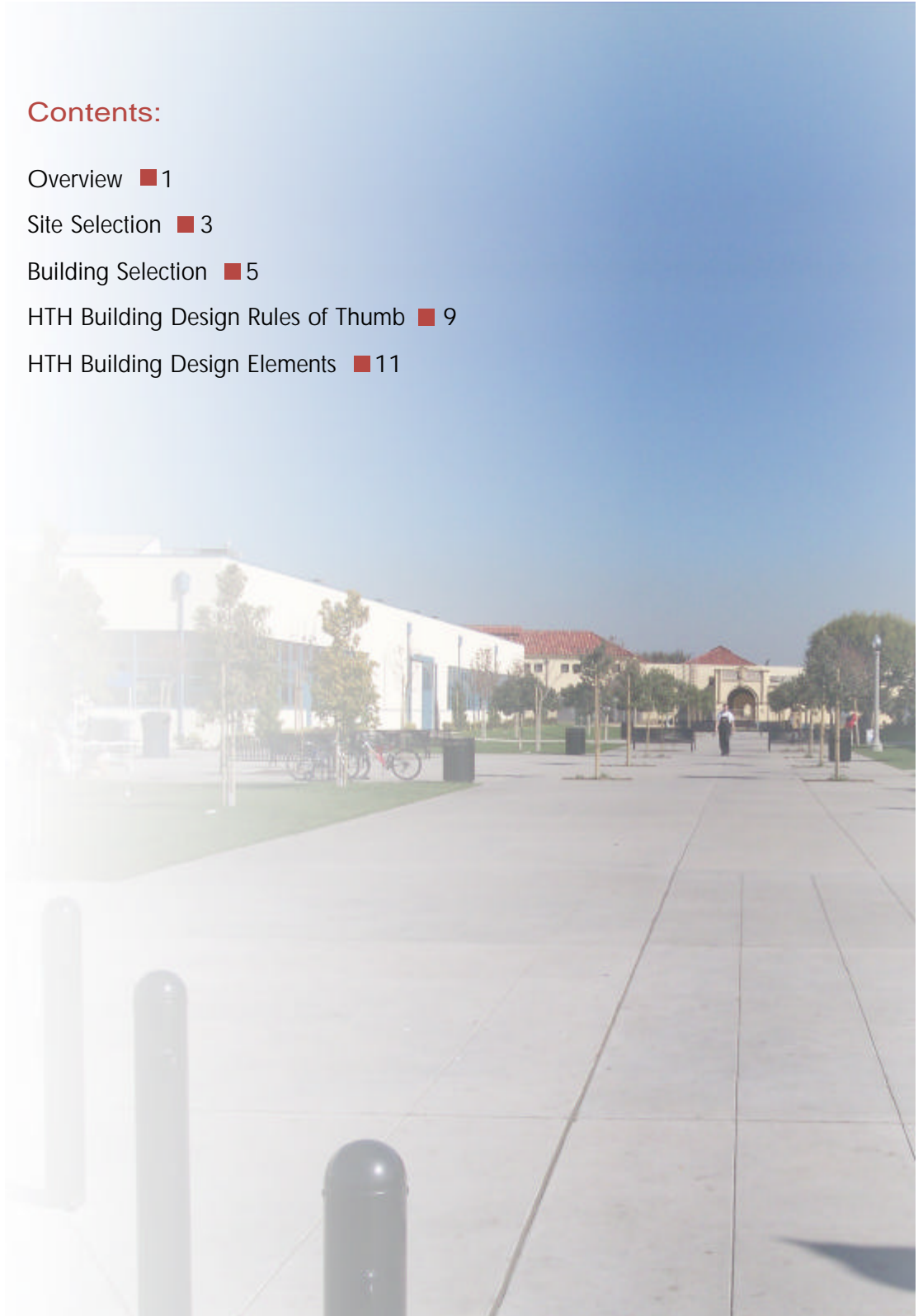


Contents:

- Overview ■ 1
- Site Selection ■ 3
- Building Selection ■ 5
- HTH Building Design Rules of Thumb ■ 9
- HTH Building Design Elements ■ 11





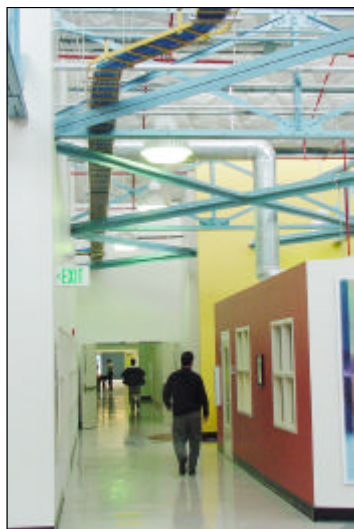
High Tech High entry and Seminar Room



High Tech High Workstation Suite



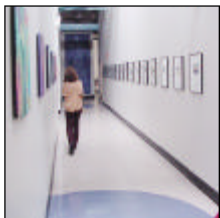
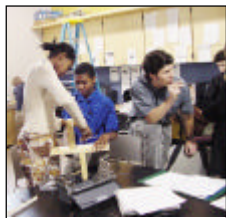
High Tech Middle Conference Room



High Tech Middle exposed systems

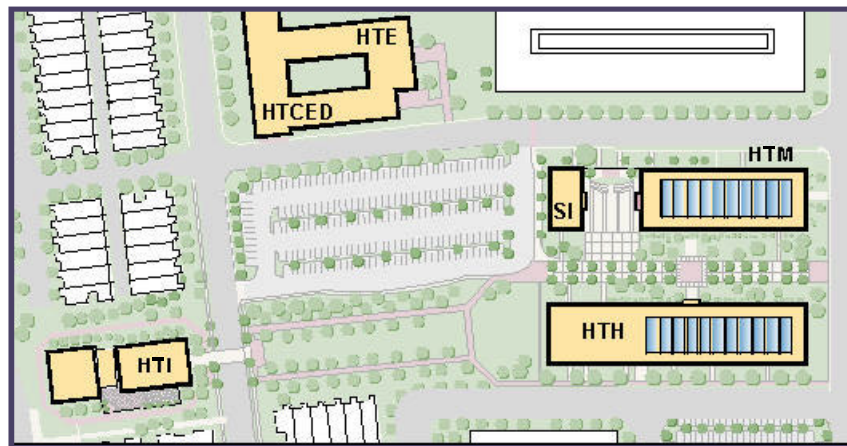


High Tech High reception desk



High Tech High Seminar Room and Gallery

Many innovative school programs succeed despite their building's architecture. High Tech High (HTH), however, has had the opportunity to design and renovate its facilities so as to enhance, support, and influence the school's academic mission. The HTH principles of personalization, common intellectual mission, and adult-world connection underlie the design of its buildings. Like the academic programs they house, the HTH buildings emphasize flexibility, team-teaching, project-based learning, and the exhibition and presentation of student work. As such, they contain a variety of spaces that are not found in traditional schools.



- HTE**
High Tech Explorer
- HTM**
High Tech Middle
- HTH**
High Tech High
- SI**
HTH Senior Institute
- HTI**
High Tech International
- HTCED**
High Tech Charter Ed

High Tech High Village Plan, San Diego, CA

The High Tech High Village consists of three interconnected but autonomous school programs, housed in four separate buildings on the grounds of the former Navel Training Center in San Diego (Point Loma), CA. High Tech High opened its doors in September 2000 in a newly renovated 38,500 square foot facility designed for 400 students in grades 9-12. A nearby 5,000 square foot facility was later renovated for use by HTH seniors. High Tech Middle opened in September 2003 in a 27,000 square foot facility designed for 300 students in grades 6-8. High Tech International is slated to open in September 2005 with 300 students in grades 9-12. The four High Tech High buildings are linked by an outdoor campus that includes an amphitheater, an eating area, outdoor seating, parking, and a greenbelt "promenade." Future plans exist for the inclusion of a partner elementary school, High Tech Explorer, and a training facility for teachers and principals, High Tech Charter Ed.



A principles-based approach to planning and design has resulted in school facilities that are highly personalized, attractive, economical, versatile, professional, and well suited to the needs of our students and faculty. Each of the four buildings has been renovated at a cost of \$100-\$110 per square foot, well within the statewide and national averages for school renovation costs. As our programs have evolved, so have our ideas about how we plan and use the spaces within our buildings. We look forward to sharing our lessons learned with HTH replication sites and other affiliated schools that are attempting to link program and building design.



High Tech High and Middle promenade



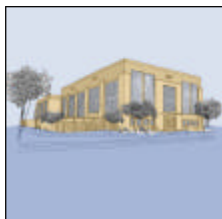
High Tech High and Middle promenade



High Tech High and Middle Courtyard



High Tech High and International



High Tech International and HTM Courtyard