

How does the
light travel?

Form Group 8_0



10th January 2007

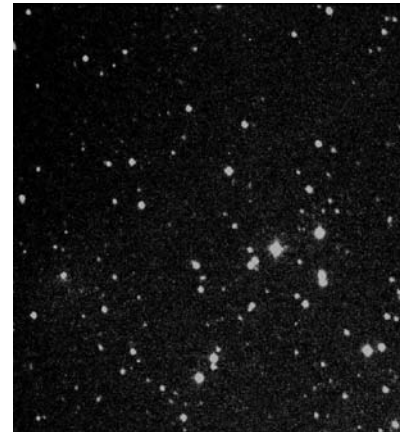
1. Light travels away from its source in all directions.



2. Light travels much faster than sound at a speed of 300,000,000 m/s, which is the same as 300,000 km/s.



3. Light sources include light bulbs, flames, TV Screens, the Sun and the stars.

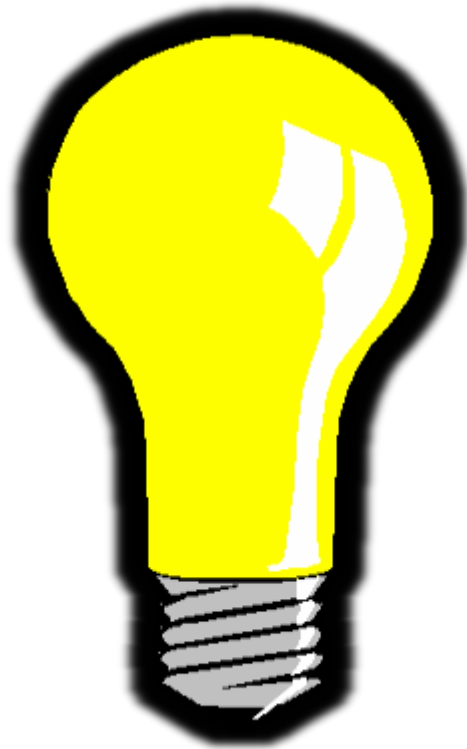


4. We see because light enters our eyes.

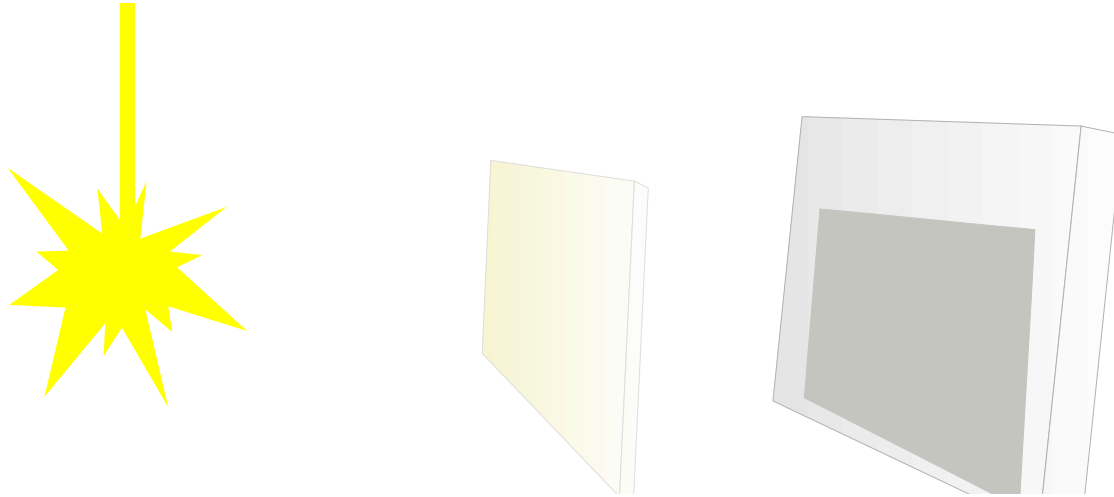


Light travels in a straight line
directly into your eye.

5. A luminous object gives out light and can also be called a light source.



6. **Opaque** materials do not allow light to pass through them.



7. **Transparent** materials allow light to pass through them.

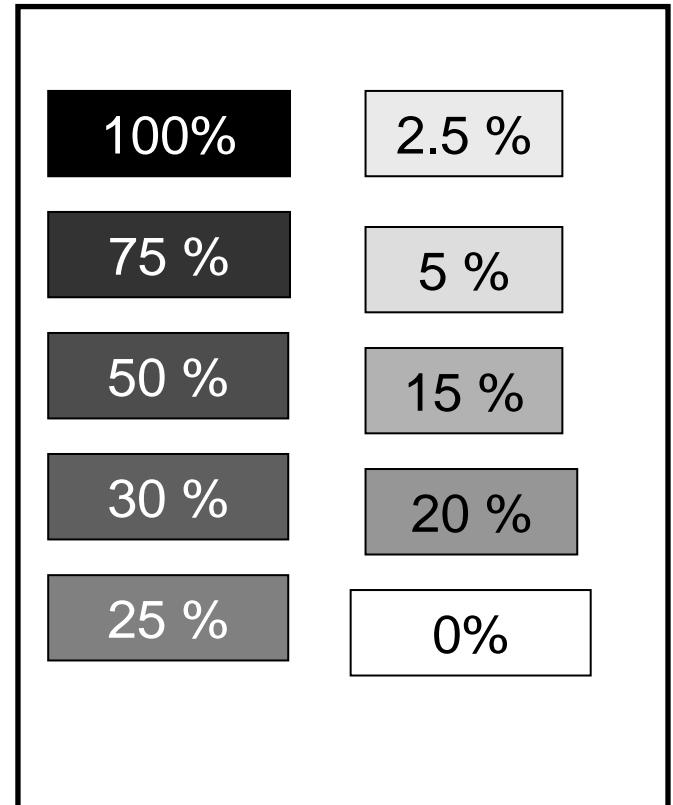
8. A material that is **translucent** only lets part of the light through.



Practical Activity

Materials	Opacity
Microscope slides	
Tissue paper	
A4 sheet	
Colour Paper	

Shading Chart



What do you really know?

Light travels very quickly_____, in straight_____lines and a
from its source in all directions.

2. ___opaque_____materials do not allow light to pass
through them.

3. Light sources include light_bulbs____, flames,
TV Screens, the stars

