

Unit K Seeing the Light

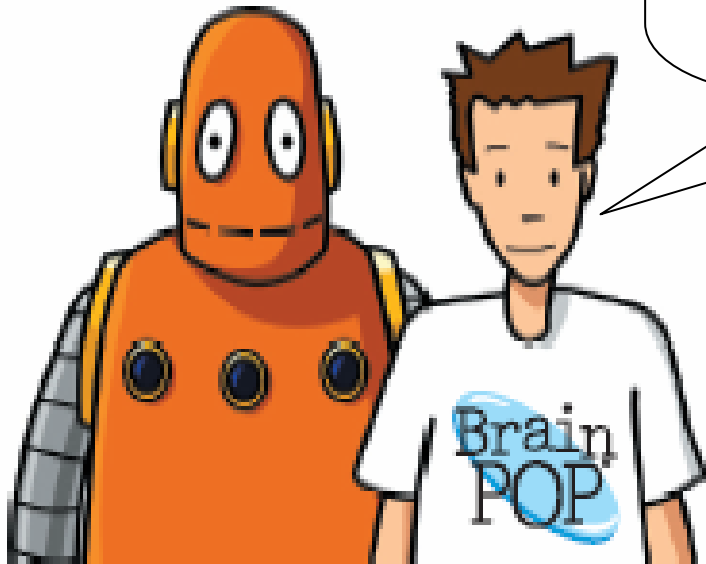
Form Group 8 Y



14th May 2007

Entrance Activity...

Name two natural sources of light.



1. Light travels away from its source in all directions.



2. Light travels much faster than sound at a speed of 300,000,000 m/s, which is the same as 300,000 km/s.

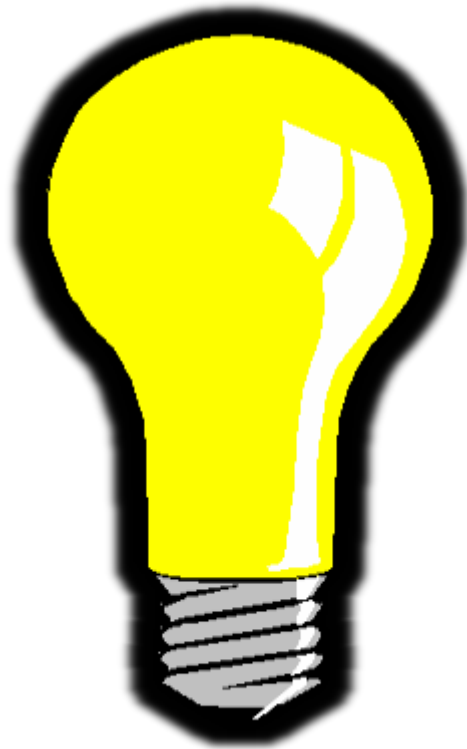


3. We see because light enters our eyes.

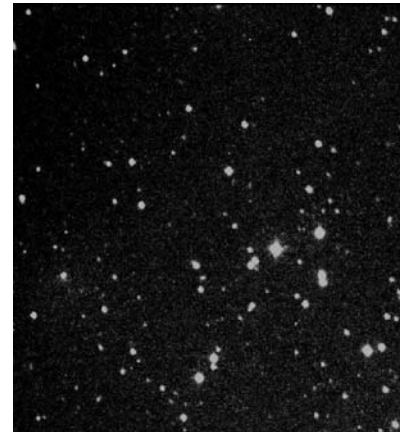


Light travels in a straight line
directly into your eye.

4. A luminous object gives out light and can also be called a light source.

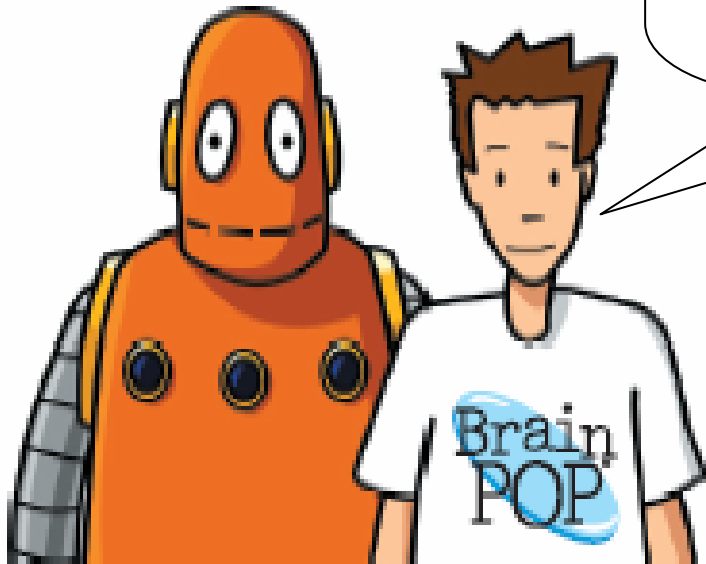


5. Light sources include light bulbs, flames, TV Screens, the Sun and the stars.



Main Activity...

Make a poster
drawing some
different sources
of light.



Do you really know?

1. Light travels very _____, in straight lines and away from its source in all directions.
2. Light travels _____ than sound.
3. Light sources include light _____, flames, _____ Screens, the Sun and the stars.

