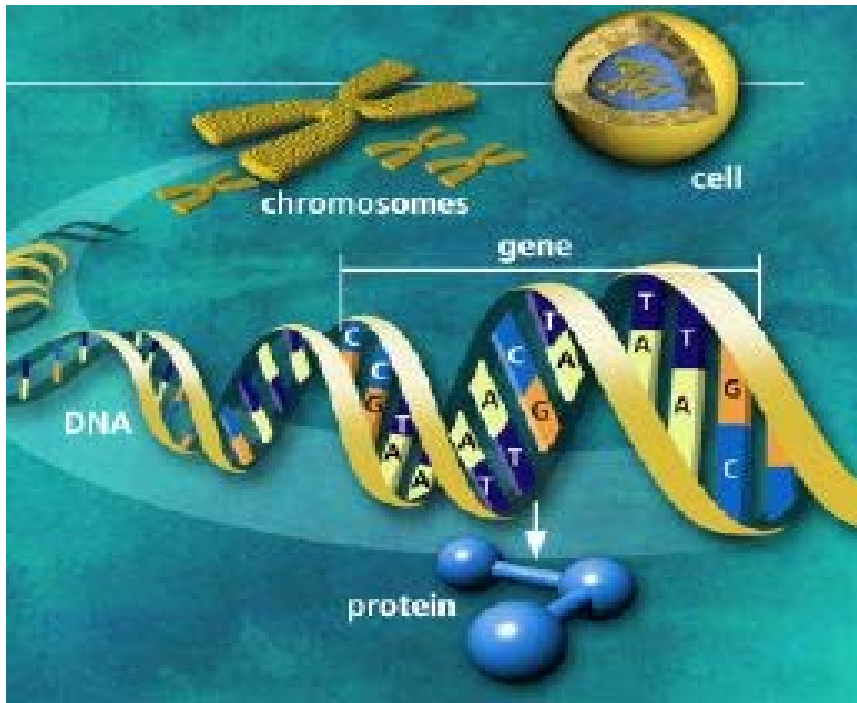
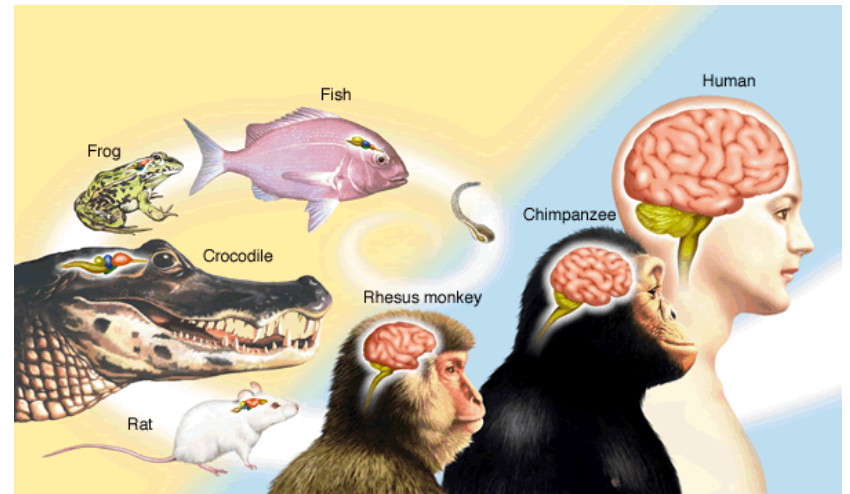
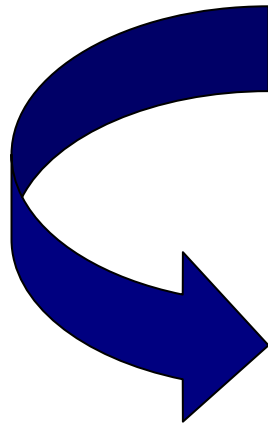




**Variation**



# Variation, Inheritance and Evolution



# Variation...



# TASK 4...

**M4** – You need to describe(using examples) how variation within a specie brings about evolutionary change.

**e.g** choose and draw a cartoon family or an animal from the same specie to describe variation within a specie.



# Supporting Information...

## Variation, Inheritance and Evolution



## Variation

- Differences between individuals of the same species.

## Causes of Variation

1. Genetic causes – because of the different genes they have inherited.
2. Environmental Causes – because the conditions in which they have developed.