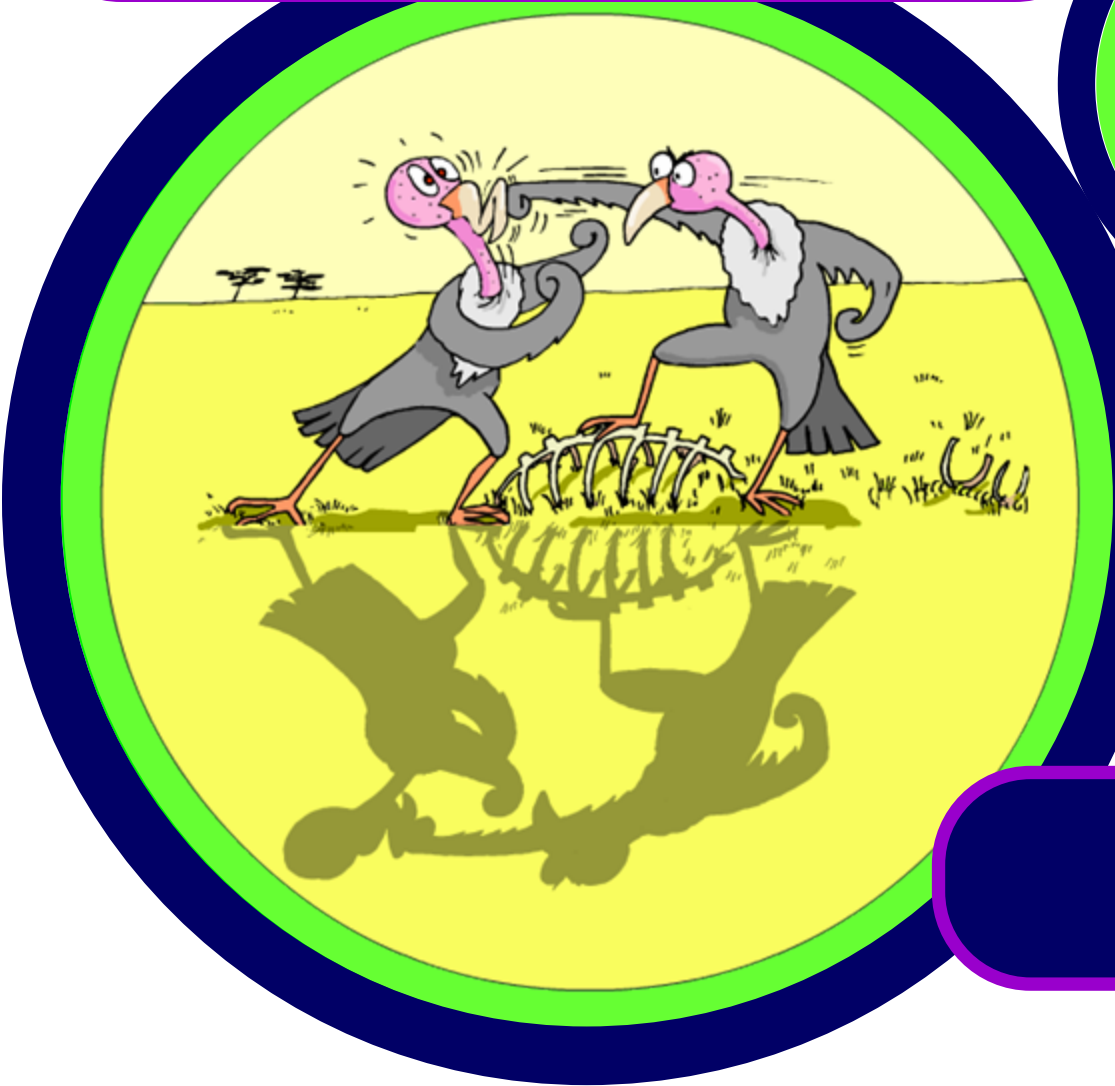


KS4 Biology



Competition





What is a population?

- What is the difference between a **population** and a **community**?

A **population** is the number of individuals of the **same species** living in a certain habitat.

A **community** includes **all the different species** living in a certain area.

- The size of the population within a community can change over time. What factors will affect population size?

competition

disease

predators

migration





What is competition?

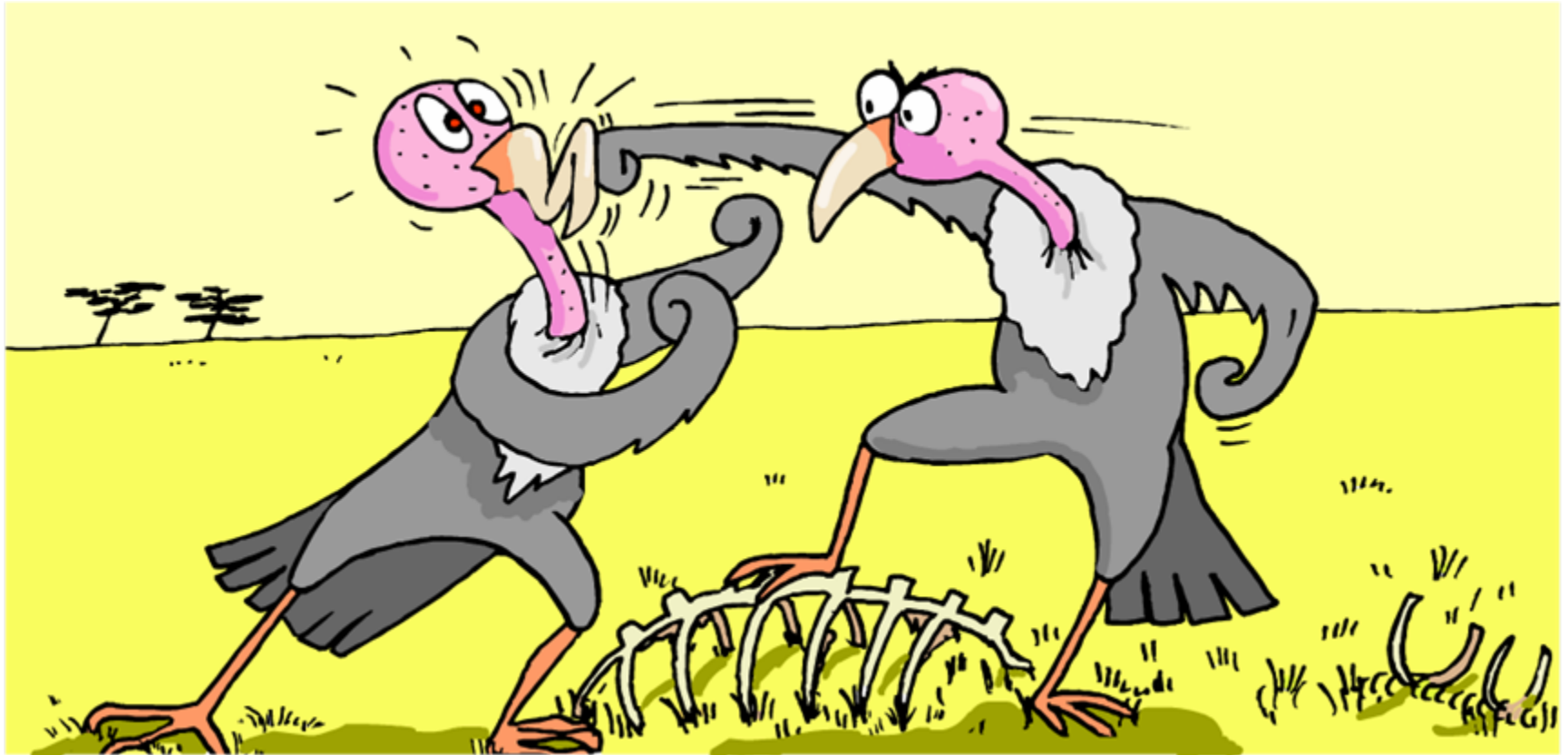
- Competition is one of the factors that affects population sizes. What type of organisms compete for resources?
Competition occurs between **different species**...





What is competition?

- Members of the **same species** also compete for resources. Why do living things need to compete and what do they compete for?



What do animals compete for?

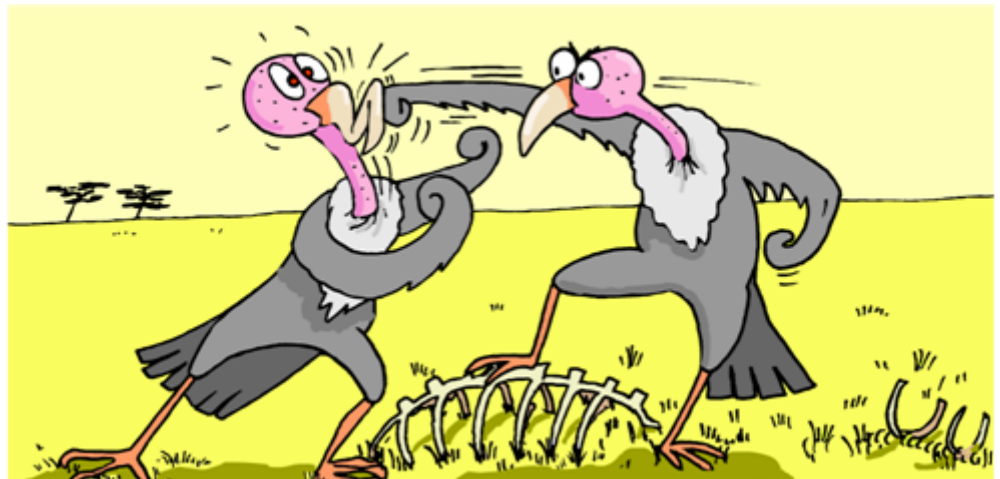
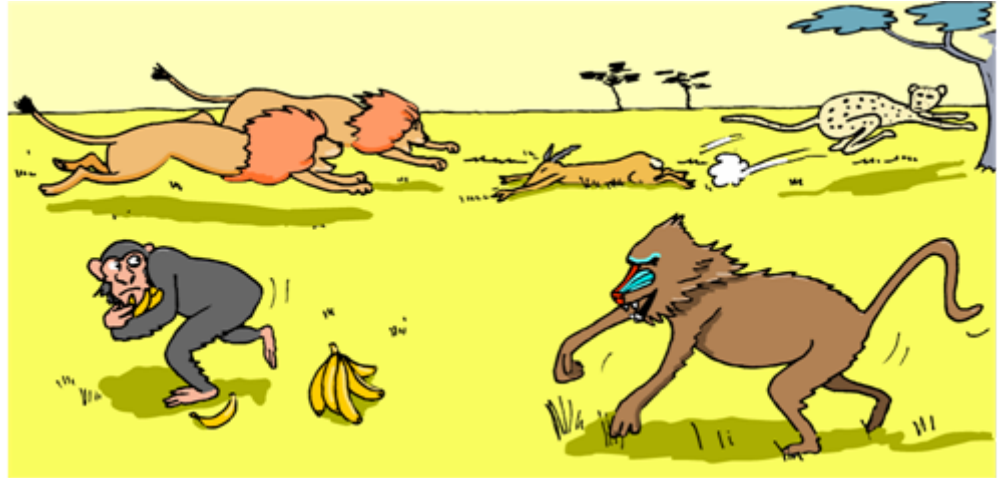
- What **four things** do animals in the same species or animals of different species have to compete for?

food

water

space

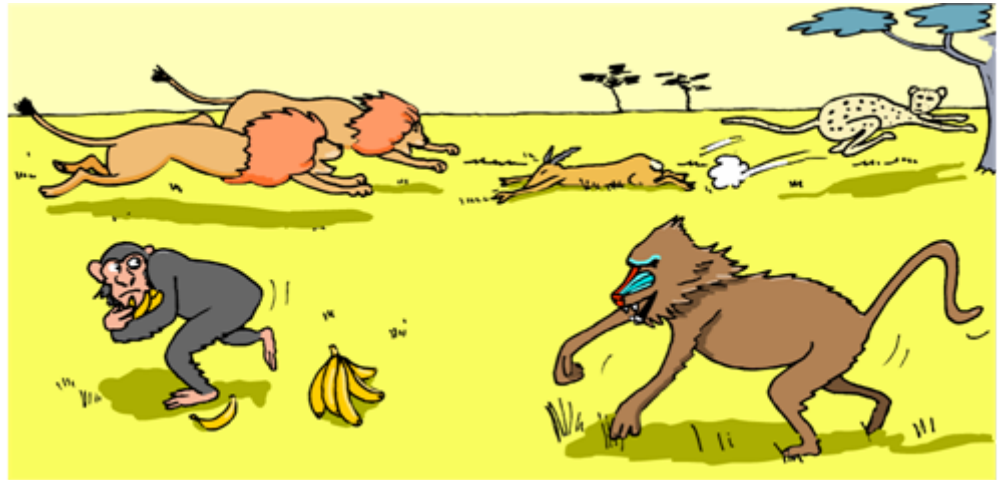
mates





- A **niche** is the position that a living thing occupies in a community.

It is a specialized type lifestyle.



What happens if animals have **overlapping niches**?

- Animals with overlapping niches **compete**.

The more the niches overlap, the greater the amount of competition between the species.

What will happen if species compete for all aspects of their niches?



What do plants compete for?

- Plants also have to compete for resources. What **four things** do plants in the same species or plants of different species compete for?

light

minerals

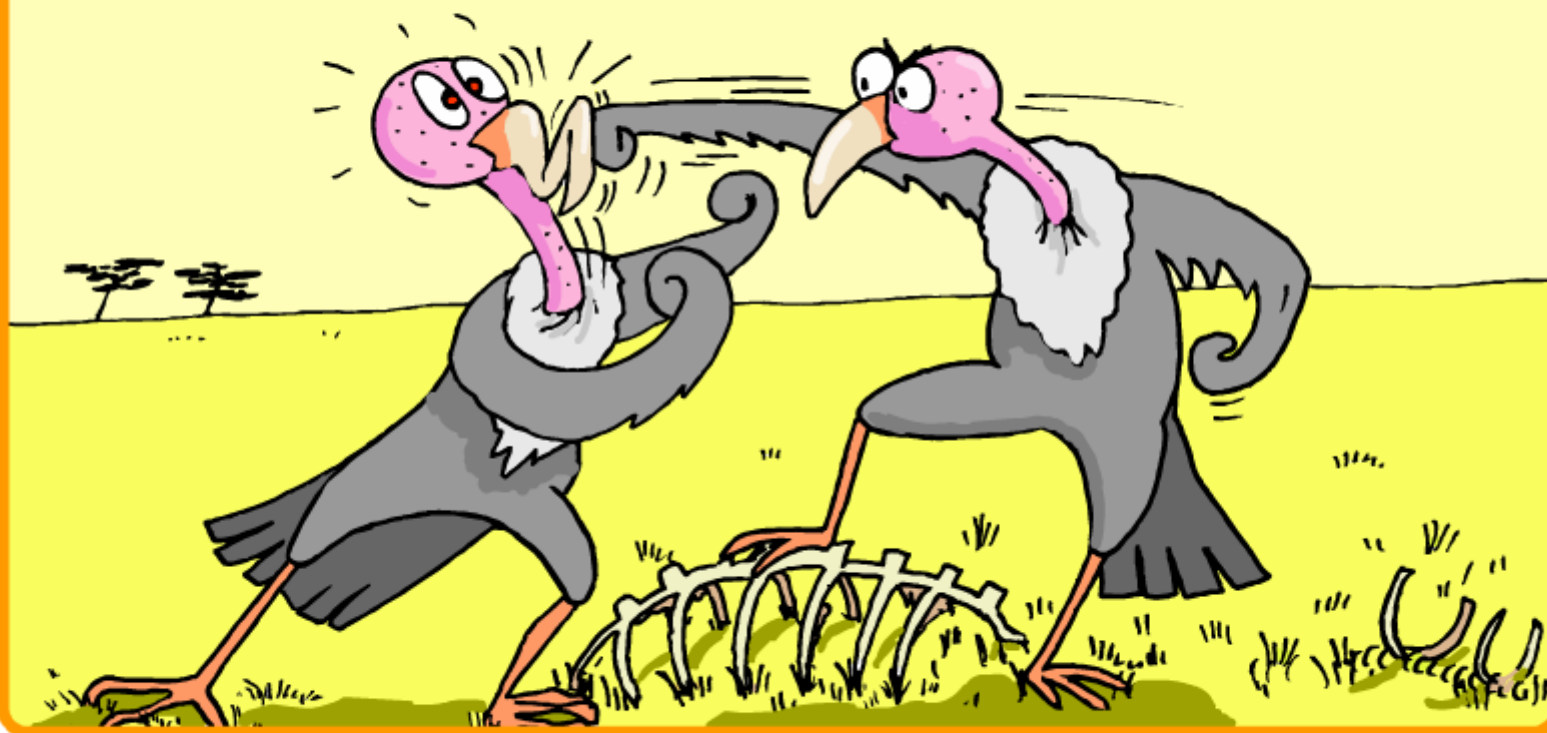
water

space





Are you ready to compete in this quiz
about competition?



start





Growth of grass in a meadow is affected by light, water, shade and sheep.



Click on the sheep to investigate how competition between these four factors affects the meadow.

