

Adaptations

A close-up photograph of an owl's face, showing its large, dark eyes and sharp beak. The owl's feathers are a mix of brown and tan, providing camouflage. The background is a soft, out-of-focus brown.

Feathers and Plumage
Flight and Locomotion
Condition Physiology
Feeding Adaptations
Nervous System

Year 10 A4

What is Adaptation ?

The variety of conditions on the surface of the Earth is huge.



Each living organism have special features called adaptations that make it possible for them to survive in their particular habitat.



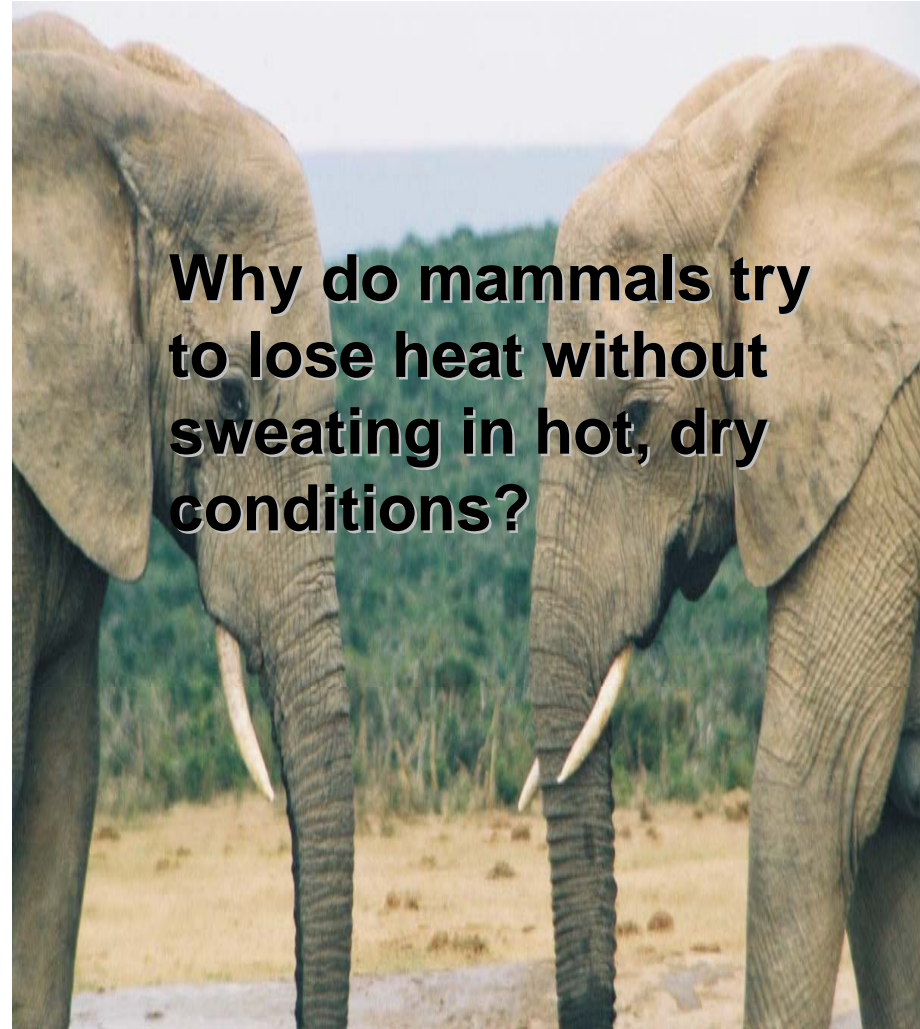
Adaptations for Survival...

**Why are so many
Arctic animals large?**

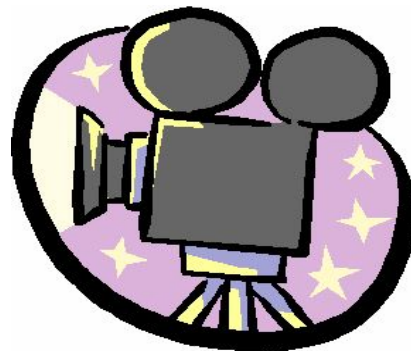
**How the Arctic
animals keep warm
in winter?**



**Why do mammals try
to lose heat without
sweating in hot, dry
conditions?**



Making a video about Animals adaptations in different climates.



True or False?

- **Animals adapted for cold environments are often large.** **TRUE**
- **Animals with a small SA/V ratio belongs to hot environments.** **FALSE**
- **Animals with a thick insulating layer of fat and fur live in cold environments.** **TRUE**
- **Large SA/V ratio, thin fur, little body fat are some of the adaptations features of hot and dry climates.** **TRUE**